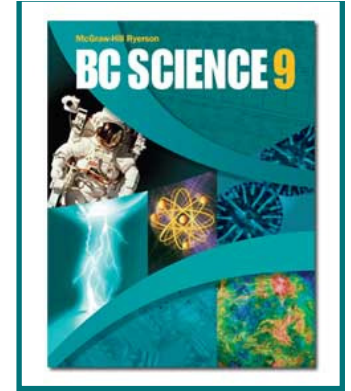
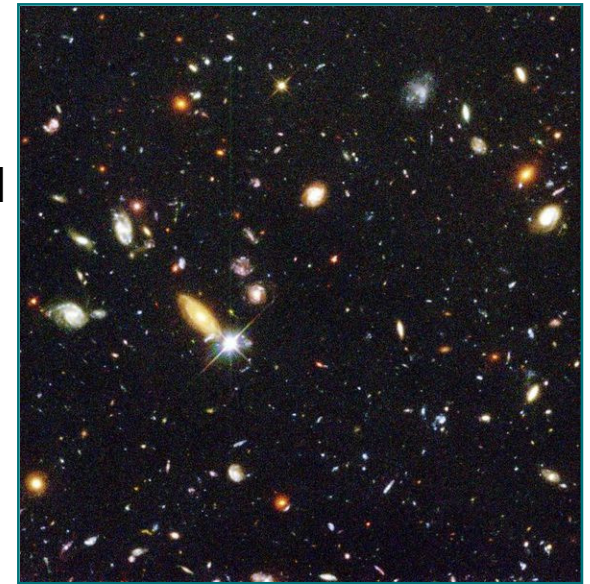


# 10.2 Galaxies



- Our star, the sun, is one of 100 million stars in the Milky Way galaxy - and there are 125 billion galaxies in the universe!
- A galaxy is a large group of stars. A nebula is a cloud of gas and dust in space that is often produces a new star, or is the remains of an old star.
- Galaxies can be spiral, elliptical or irregular in shape.
  - How fast a galaxy spins helps define its shape.
- Each galaxy has stars clustered as globular clusters or open clusters.



**[Take the Section 10.2 Quiz](#)**

See pages 356 - 360